

## ihiji INV-APP-500 Appliance



### Technical Specifications

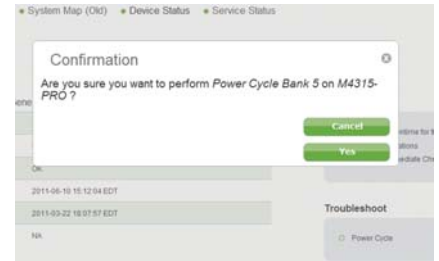
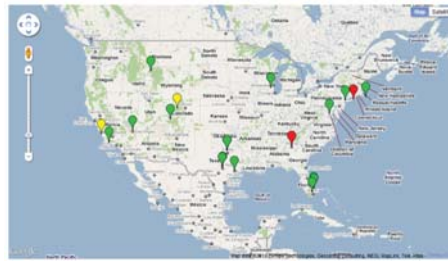
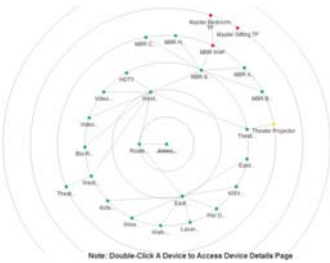
#### General

Dimensions	3.27" x 2.05" x 1.70" (WxDxH)
Weight	1lb (Unit and Box)
Temperature Range	32°F - 104°F (Operating)

#### Power

Power Adapter	100-240V, 50-60Hz
Power Supply	12V DC, 3A
Power Consumption	5W (Typical)

### invision 2011 New Feature Sample Screen Shots



### invision 2011 Solution Features and Benefits

#### 2011 Feature Additions:

- 96% energy savings cost when compared with the average 175W desktop computer
- Low cost appliance has mass market customer price point
- Single web interface for control of multiple manufacturer IP power products on multiple OS platforms
- Cloud-based detailed monitoring of AMX, Control4 and Crestron
- Ability for detailed monitoring of IP, Zigbee, and legacy RS-232 devices
- Centralized dealer dashboard and geographical view for operations center view of client sites
- Improved access for viewing and rebooting on mobile phone and tablet devices
- Ability to document non-monitored devices for easy reboot, troubleshooting and reference
- Support of leading manufacturers eliminates the need to manage multiple tools and interfaces
- Robust reporting for diagnostics, troubleshooting, and client benefits
- Manufacturer specific modules allow for native configuration and advanced monitoring

#### Solution Architecture & Software:

- Web-based user interface allows access without special software & is accessible from any OS
- No field configuration required - automatic upgrades
- Real-time monitoring provides SMS or email alerts when problems occur
- Appliance hardware has no moving parts to eliminate points of failure on client sites
- Appliance-based solution located behind the firewall creates a highly secure system & limits field maintenance
- Linux-based appliance and server solution for high reliability and performance while reducing dealer costs
- Cloud-based Software as a Service for distributed performance and high availability keeps dealer expense low